

*... dedicated to educate,
 communicate and celebrate
 community spirit through the
 generosity of our members.*

P.O. Box 807, 800 S. Main
 Rochester, IN 46975

Phone: 574.223.2227
 Toll Free: 877.432.6423
 Website: <http://nicf.org>

NICF Board of Directors

Tom Edington - Miami
President
 Mat Swanson - Starke
Vice President
 Bob Hoffman - Fulton
Treasurer
 Susie Perkins - Miami
Secretary

Alan Terrell	Fulton
Marilyn Fritts	Fulton
Robert S. Cannedy Jr.	Fulton
Sandy Sawyer	Fulton
Debbie Balsbaugh	Miami
Steve Gough	Miami
Tyra Walker	Miami
James Hardesty	Starke
Brad Lawrence	Starke
Barbara McLaughlin	Starke
Mark Smith	Starke

Administrative Staff

Terri Johnson
Executive Director

Chris Gleim
*Program/Scholarship
 Coordinator*

Sandy Grandstaff
Administrative Assistant

Tami Murphy
Administrative Assistant

County Directors

Teri Carr
Fulton Assoc. Director
 822 Main Street
 Rochester, IN 46975
 574.224.3223

Bernard Giver
Miami Assoc. Director
 13 East Main
 Peru, IN 46970
 765.475.2859

Corinne Becknell Lucas
Starke Office Admin.
 P.O. Box 16
 North Judson, IN 46366
 574.772.3665

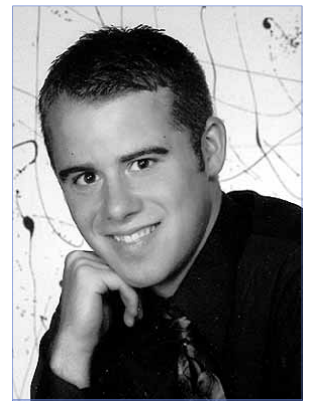
Lilly Endowment Community Scholars 2004

The Northern Indiana Community Foundation, Inc. is honored to be the organization that makes the Lilly Endowment Community Scholarship a reality for graduating high school seniors in Fulton, Miami and Starke Counties. Although the Lilly Endowment Inc. established the scholarship and provided the funding and guidance, the selection process is up to each local community foundation, their scholarship selection committee and Independent Colleges of Indiana. We thank them for their time, support and excellent work.

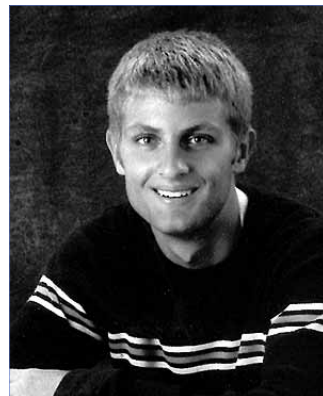
We are proud to announce the 2004 recipients of the Lilly Endowment Community Scholars for all three counties that make up the Northern Indiana Community Foundation.

Miami County Lilly Endowment Community Scholars 2004

Andrew L. Berryman - Andrew is a graduate of Peru High School and is the son of Lance L. and Louanne Berryman. He plans to attend Ball State University and major in Spanish education. After receiving his bachelor's degree, he would like to pursue his master's degree in secondary education.



Andrew L. Berryman
 Peru High School 2004



David M. Shaffer
 Peru High School 2004

David M. Shaffer - David, a graduate of Peru High School, is the son of Kenneth N. and Christen I. Shaffer. He will major in architecture at Ball State University. After receiving his bachelor's degree, he will work as a journeyman architect prior to taking the mandatory state board tests to become a fully-qualified architect.

Michele M. Swihart - Michele, a graduate of Peru High School, is the daughter of David and Deborah Swihart. She plans to attend Purdue University this fall where she will major in pharmacy. Her career path will be in pharmaceutical research or as a pharmacist in a hospital.



Michele M. Swihart
 Peru High School 2004

In Miami County, finalists of the scholarship process receive a one-time, \$1000 scholarship from the Miami County Community Foundation. Those recipients are Elise N. Hiers, Peru High school graduate and daughter of Randy A. and Valerie S. Heirs; Jennifer L. Keifer, graduate of Peru High School and daughter of Douglas E. and Judi K. Keifer; and Stephanie L. Riggle, a graduate of Maconaquah High School and daughter of William and Lisa Riggle.

Starke County
Lilly Endowment Community Scholars
2004



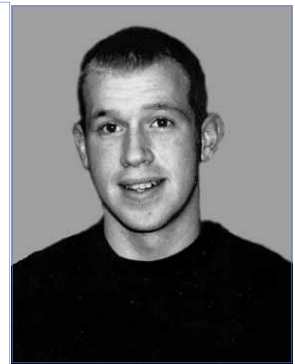
Matthew W. Fosler

A graduate of Knox Community High School, Matthew is the son of Jeff and Shirley Fosler. He will major in chemical engineering and chemistry education at Purdue University and would like to teach chemistry at the secondary level.

Matthew W. Fosler
Knox Community High School
2004

Matthew B. Baughman

Matthew is the son of Bruce and Tina Baughman and a graduate of Oregon-Davis High School. Matthew will attend Bethel College and major in Christian ministries and would like to pursue a career as a youth pastor or in a Christian leadership position.



Matthew B. Baughman
Oregon Davis High School
2004

Matthew R. Musial

Graduating from The Indiana Academy for Science, Mathematics, and Humanities, Matthew plans to attend Valparaiso University and pursue a career in the legal profession. Matthew is the son of Robert and Carla Musial of Knox.



Matthew R. Musial
Indiana Academy 2004

2004 Fulton County
Lilly Endowment
Community Scholars



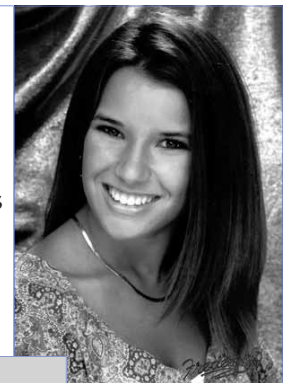
Katie B.W. Martens

Katie is the daughter of Mark E. and Betty J. Martens and is a graduate of Rochester High School. She plans to attend Indiana University and major in mathematics and plans a career in math education.

Katie B.W. Martens
Rochester High School 2004

Kacy D. Winegar

Kacy is a graduate of Rochester High School and plans to major in business and minor in communications at Butler University. Kacy is the daughter of R. Scott Winegar and Dee Mitchell.



Kacy D. Winegar
Rochester High
School 2004

Brianne L. Walgamuth

Brianne, a graduate of Manchester High School, is the daughter of Patrick R. and LaVerta M. Walgamuth. Brianne plans to major in biochemistry at DePauw University. Then she would like to join the Peace Corps before attending graduate school.



Brianne L. Walgamuth
Manchester High School
2004

About the selection process:
First, local community foundations and their scholarship selection committees recommend nominees and alternates to Independent Colleges of Indiana (I.C.I.), and then the final selection is made by I.C.I.

Carolyn Sharp - *remembering home*

The Jane and Bob Haskett Fund

Miami County was first established in 1832 and the Sharp Family has been a part of the community almost since its inception. The family heritage starts back with the Bobtail Pike farm that was purchased in the 1840's and continues on today.

When Carolyn Sharp of Indianapolis made the decision to create an unrestricted endowment in the name of her sister-in-law, Jane, and Jane's husband Bob, it was to continue the good work the couple did in Peru and Miami County. Although Mrs. Sharp grew up in Ohio, she felt a bond to the community through her husband, Richard, who grew up and went to school in Peru. She always felt it was her adopted home.

Bob and Jane Haskett were involved in local government and owned Arnold's Candy Store in the city of Peru. Bob served as mayor, county and city councilman and was active in many organizations. His wife Janey was also active in politics and with the community.

Arnold's Candy Store is a hometown favorite, and was owned by the couple for over 40 years. The candy store still continues to provide goodies and delights to the locals and to those people who have left their hometown of Peru but still order treats to remind them of home. Through the Jane and Bob Haskett Fund, the community foundation and Carolyn Sharp will continue to provide Miami County with funds to meet the needs of its local charities and organizations.

Remembering your hometown with the creation of an endowment is not only important for the citizens who live there today, but also gives the donor a sense of pride and purpose when they see the local needs met by those funds. What makes it all the more "sweet" is having the legacy of the Hasketts' service to the community they loved continue on forever.

For more information on the Jane and Bob Haskett Fund or to learn how you can start an endowment in the name of your family, contact Bernard Giver at the Miami County Community Foundation.

**LIVING
LEGACY**

Hoosier Valley Railroad Museum *keeping the railroading tradition on track*

On a Saturday morning in North Judson you can hear a hearty "all aboard" and the train whistle blow throughout the sleepy hamlet. Just as in many small towns in Indiana, North Judson has a rich railroad tradition and the Hoosier Valley Railroad Museum and their members are making sure the railroading tradition lives on.

In the spring of 1988, the organization acquired #2789, a huge "Kanawha" steam engine (shown at right), and the dream of creating a rail museum was born. Track and switches have been relaid on the abandoned right-of-way of the Erie Railroad through North Judson. Three former C&O railway shanties have been relocated to the museum site, one serving as the depot gift shop. A building was donated, relocated and reassembled in 1994-95 and now serves as the museum's backshop, where repair and restoration work continues on the C&O #2789.

The museum has over 30 pieces of rolling stock in its collection, most awaiting repair and restoration. Freight cars of the various types, cabooses of various design, operable diesel switch engines and an Orton Locomotive crane comprise the bulk of the museum collection. The railroad museum also has a disassembled 100' turntable in its collections.

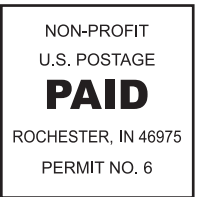
All the work of building the Hoosier Valley Railroad Museum has been and is being done through the efforts of the museum's own membership. The Starke County Community Foundation has provided funding to the museum in the GIFT PHASE III initiative and also yearly in the fall "community grant" cycle. All told the foundation has provided the museum with over \$155,000 to help them tell the story of the railroad and to preserve the steam engines that helped build America.

real results
your community foundation at work





Northern Indiana
Community Foundation
P.O. Box 807
Rochester, IN 46975



Congratulations *Pike* LUMBER COMPANY on reaching their 100th anniversary ... 1904 - 2004



"Ours was a family of pioneer settlers in Wabash and Fulton Counties," says Pike Lumber official, Channing Utter. "My forbearers were farmers, tile mill operators, saw millers, retail merchants, horse and mule traders. All were Christians who believed we had a scriptural and moral responsibility to leave our communities better than we found them... We were to repay our communities for the privilege of raising our families and prospering here. My father (the late Howard Utter) and I discussed many times prior to his death in 1995, our interest in establishing a permanent endowment for Pike Memorial Park. The park was a life-long passion of my mother, the late Helen (Pike) Utter.

Now, this all took place before the establishment of the Fulton County Community Foundation. After talking with attorneys, we concluded that what we wanted to do would be very difficult, quite expensive and finally, we were unable to identify a custodian of the fund "in perpetuity." In late 1992, a group of concerned citizens started looking into the makings of a local foundation. Ten years ago in October 1993, the Northern Indiana Community Foundation, (Fulton County was a founding county) was established. I, of course didn't become fully aware of the foundation until after my father died. This was about the time Lilly Endowment Inc. was offering the GIFT Initiative with matching funds. Once we learned how the foundation worked, we set out to establish four funds that in prior years had proved impossible for us to do. We're glad to have found the vehicle needed to fulfill our philanthropic wishes. Even though we are beyond the matching phases, we know the importance of continuing to build our funds. Growing our endowed funds is the responsible approach to charitable giving. Both from a corporate standpoint as well as private citizens, we're prepared to help meet the ever-changing needs of our community. Now, we have a means by which we can give back to our community... today and forever!"